

## D. Pajarito Corridor East Planning Area

### 1. General Description

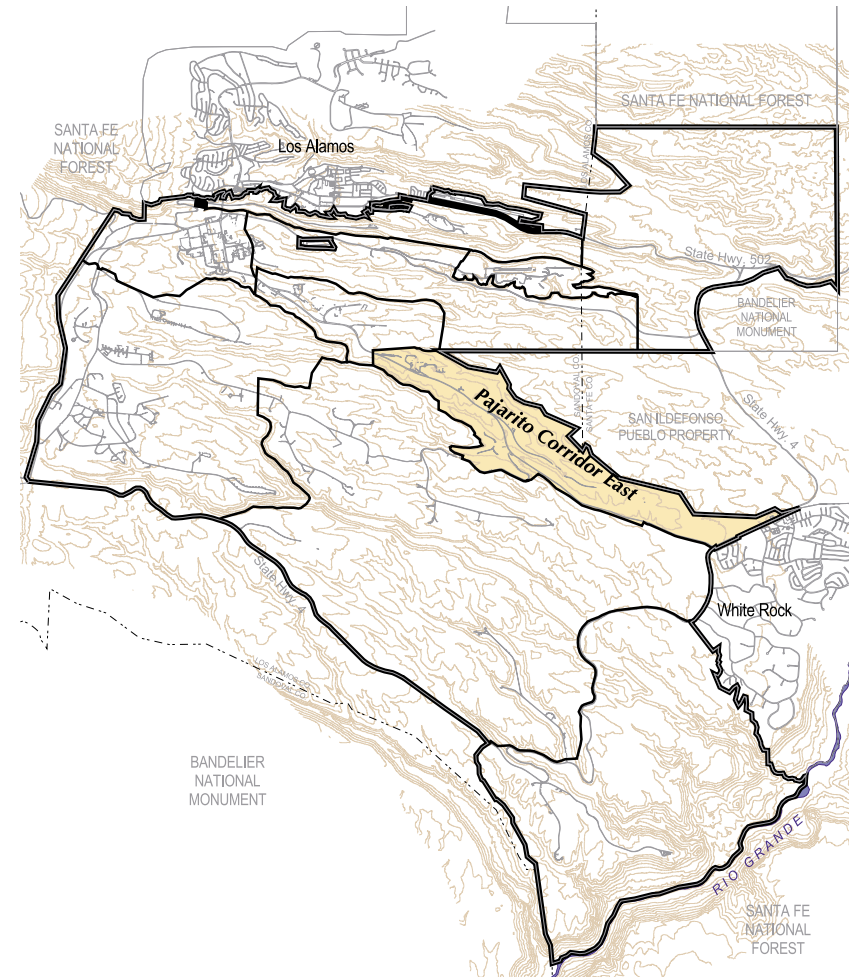
Pajarito Corridor East Planning Area is approximately 2.6 square miles in area. The planning area is bounded by San Ildefonso Pueblo to the north and New Mexico State Highway 4 and White Rock community to the east. The Dynamic Testing Planning Area lies to the south. Pajarito Road bisects the planning area from the northwest to the southeast for approximately 4.6 miles.

The Pajarito Corridor East Planning Area houses nuclear materials R&D, experimental science, waste management and physical/technical support uses. Pajarito Corridor East Planning Area consists of TAs-18, -46, -51, -54, -64 and a narrow width of the northern boundary of TA-36.

The following assumptions will guide the physical planning of the Pajarito Corridor East Planning Area for the next 10 years:

- *The long-range assumption is to cease nuclear activities at TA-18. This will require transfer of some key functions to the proposed nuclear campus at TA-55. Some activities may be relocated to the Nevada Test Site.*
- *The storage of contaminated waste and its characterization and shipment to WIPP will continue to be handled through TA-54.*

Map VI-D1: Pajarito Corridor East Key Map



## 2. *Opportunities and Constraints*

The following opportunities and constraints affect physical planning in the Pajarito Corridor East Planning Area.

### *Physical Constraints*

The topography of the Pajarito Corridor East Planning Area imposes major constraints. Development in its western half is restricted to narrow mesa tops. Development to the northeast is restricted by Canada Del Buey Canyon. The canyon contains 100-year floodplains and associated wetlands. As in most Laboratory canyon bottoms, archeological surveys have identified significant archeological sites there. In addition, federally protected species habitats are in the northwestern portion of this planning area. Development in these environmentally sensitive areas is discouraged.

### *Operational Constraints*

Much of the Pajarito Corridor East Planning Area is restricted because of special nuclear materials (SNM) and hazardous waste management functions that occur there. There are eight nuclear sources with safety analysis report areas in TA-18. Work within these areas is restricted to Laboratory and Laboratory contractor personnel only.

Both TA-51 and -54 host research, management and disposal operations dealing with radioactive solid and hazardous chemical waste. As a consequence of these activities, there are numerous solid waste management units (SWMU) and point release sources throughout the area. Currently, it is anticipated that Savannah River will be unable to receive any waste materials until 2007.

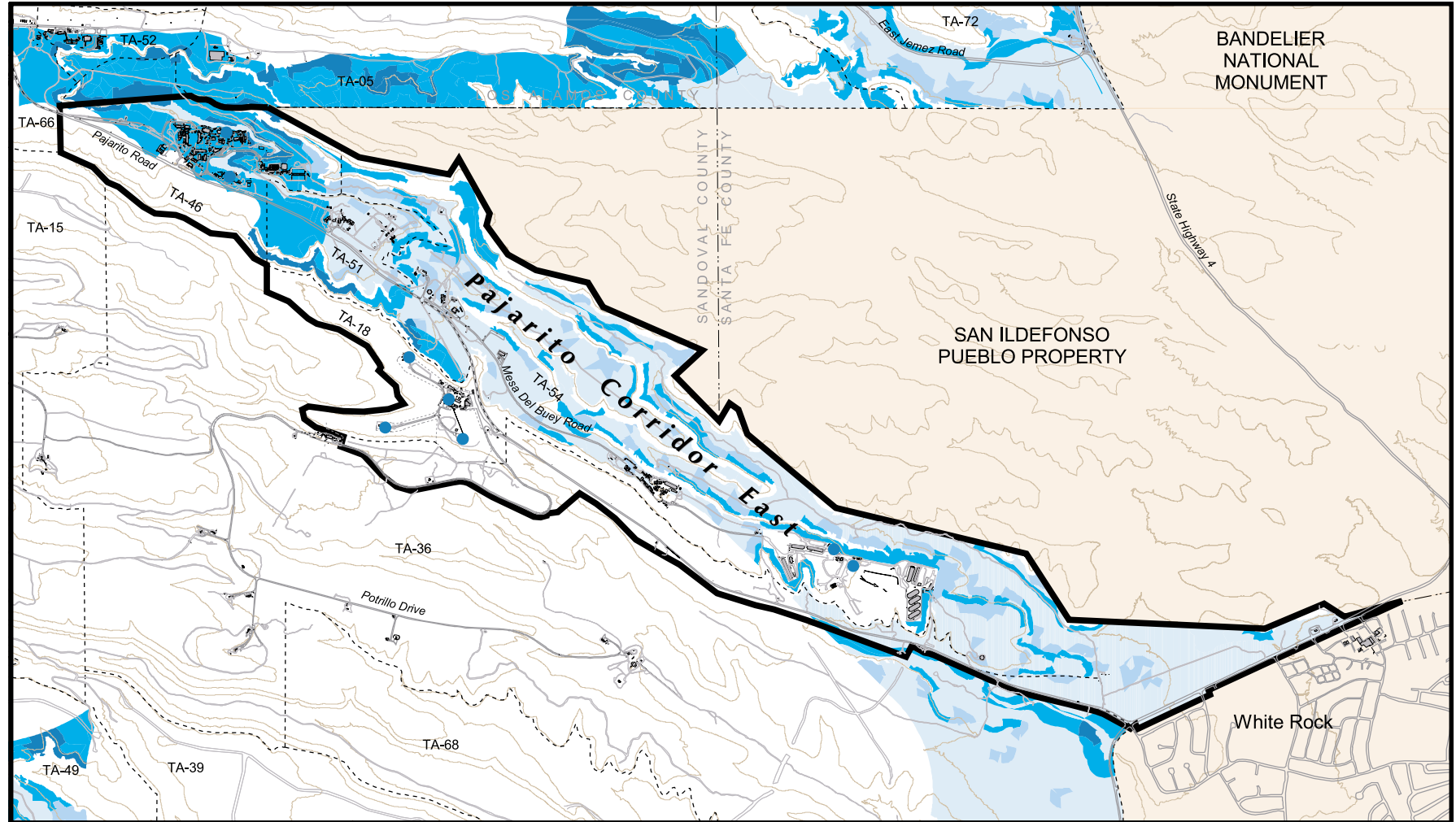
Electrical power lines parallel much of Pajarito Road and restrict certain experimental activities unless measurement instruments are properly shielded.

The entire southern boundary of the Pajarito Corridor East Planning Area is adjacent to the High Explosives Testing Area and its associated explosive safety zones and buffer areas. The northern and eastern boundaries of TA-54 abut San Ildefonso Pueblo and White Rock communities, respectively. These jurisdictions could pose development restrictions.

### *Development Opportunities*

Development opportunities exist east and west of TA-46, on all sides of TA-51, north of Pajarito Road in TA-36, and north of NM State Highway 4 in the eastern end of TA-54. Potentials for redevelopment become available upon removal of SNM activities from TA-18. Utility and road access are readily available in this planning area.

Map VI-D2: Pajarito Corridor East Development Opportunities Map



LEGEND

- Technical Area Boundary
- Non Dept. of Energy Property
- ▭** Planning Area
- Unique Operational and/or Physical Considerations Exist
- Excellent Development Potential
- Good Development Potential
- Fair Development Potential
- Poor Development Potential
- Radiation Source

Areas of one acre or less are incorporated into the surrounding larger areas.



### 3. *Projects for the Pajarito Corridor East Planning Area*

Proposed, planned or budgeted projects noted below and on the facing summary map, VI-D3, for this planning area were identified through Laboratory documents or by stakeholders during the Comprehensive Site Plan 2000 process. The symbol *NS* stands for project “Not Shown” on the summary map.

#### **Consolidation of SNM Activities**

- ① Proposed long-range cessation of nuclear activities at TA-18, relocation of activities to other sites.
- ② Proposed improvements as per TA-54 Land Use Plan.
  - Future dome across pits 18, 27 and 36
  - Area J dome over pit 4 with additional sheds
  - Electronic access control gate
  - Truck scale at Area J opposite Pit 4
  - Proposed asphalt pad for container storage

#### **Transportation Development**

- ③ Planned upgrade of intersection of TA-54 access road and Pajarito Road to correct traffic safety problems.
- ④ Planned construction of nonpublic road from TA-48 to TA-54 to move SNM material on private road and eliminate public road closings from Pajarito Corridor West to TA-54.
- ⑤ Improve the road eastward from TA-54 to Pajarito Road for safety and emergency access needs.
- ⑥ Proposed upgrade of the road along the boundaries between TA-18 and -36 to provide a second entrance to the Dynamic Testing Planning Area.

#### **Security Development**

- ⑦ Proposed alternate guard gate on Pajarito Road if SNM operations continue at TA-18.

#### **Infrastructure Revitalization**

- NS* Ongoing utility revitalization activities as noted in Site Wide Planning Area section.
- ⑧ Planned upgrade of 3-in. natural gas line from Pajarito Corridor West to TA-54 to meet capacity needs at TA-54.
  - ⑨ Proposed reconductoring of Norton electrical transmission line to increase site wide electrical distribution capacity.

#### **Facilities Revitalization**

- NS* Proposed replacement, removal or upgrade of temporary facilities in planning area.

#### **Quality Environment Enhancement**

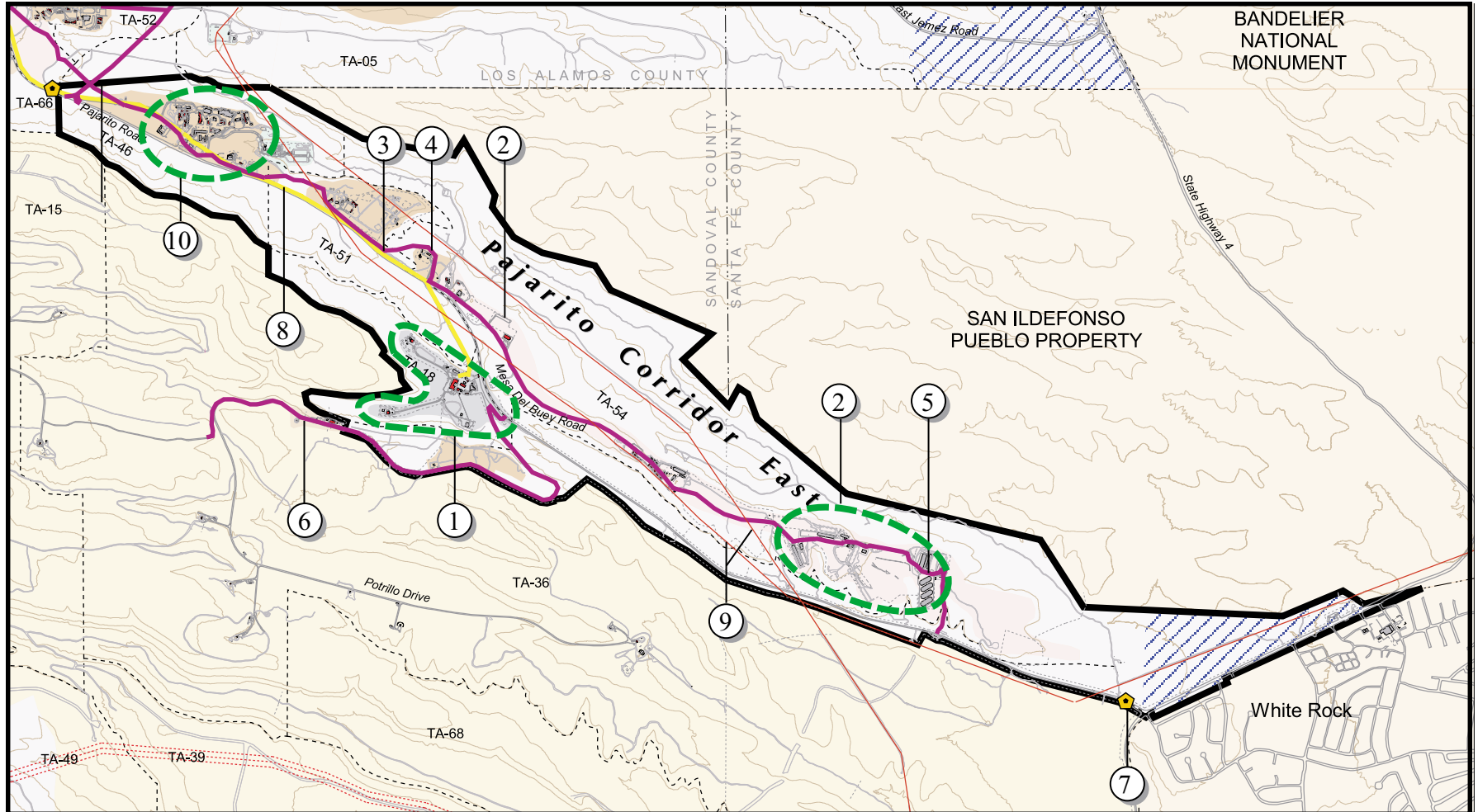
- ⑩ Proposed development of walks and outdoor spaces at densely built locations.

#### **CSP 2000 Issues for Pajarito Corridor East Planning Area**

Important issues that need discussion for continuing refinement of the CSP in this planning area:

- *Identify potential to cease nuclear activities at TA-18. Identify possibilities for reuse of site and facilities.*
- *Assess status of projects identified in the 1991 TA-54 Land Use Plan.*
- *Assess opportunity to replace, remove or upgrade temporary facilities in this planning area.*

Map VI-D3: Pajarito Corridor East Planning Area Summary Map



- |                            |                            |                                  |
|----------------------------|----------------------------|----------------------------------|
| Experimental Science       | Waste Management           | Gas Pipeline                     |
| High Explosives R&D        | Land Transfer Tracts       | Long Range New or Improved Roads |
| High Explosive Testing     | Planning Area              | New or Improved Roads            |
| Non-DOE Property           | Fair or Poor Buildings     | Proposed Fences                  |
| Nuclear Materials R&D      | Area of Interest           | Proposed Guard Gate              |
| Physical/Technical Support | Electric Line 115 kV       |                                  |
| Reserve                    | Proposed Elec. Line 115 kV |                                  |

